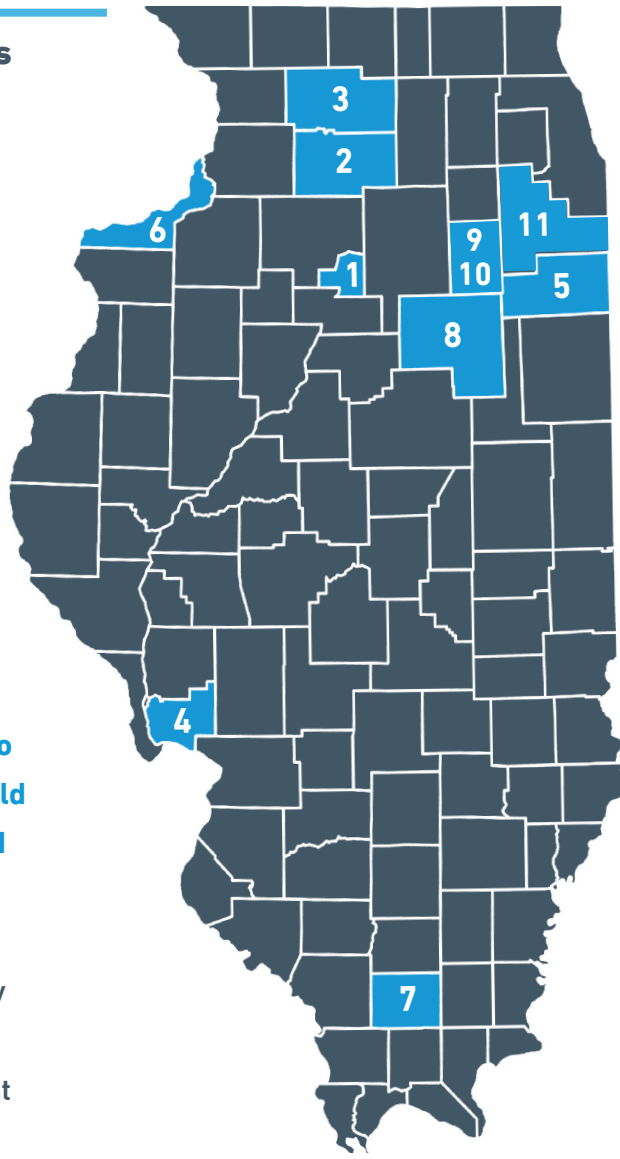


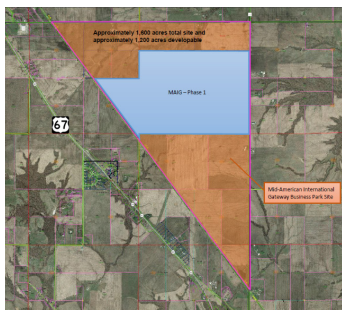
Illinois' megasites

provide companies with the locations they need to grow their businesses in industries from **advanced manufacturing, to indoor farming, to transportation & logistics.**

These sites provide **unmatched access to the country and world via air, rail, road and port,** making it easy to reach suppliers and customers. They also tap into Illinois' reliable and low-cost utility providers.



4. Mid-America International Gateway Business Park • Jerseyville



- 1,600 acres
- Rail served by Kansas City Southern
- Near state highway 67 and I-255

6. I-88 Site • East Moline



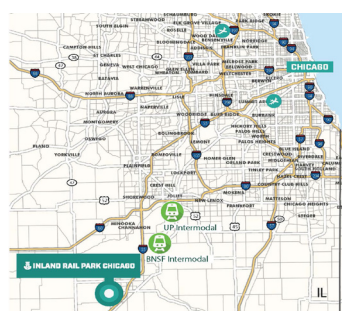
- 2,200 acres
- Near Interstate I-80
- Ability to accommodate large water consumer project; waste water plant can accommodate large industrial producer

8. MegaSite 55 • Dwight



- Norfolk Southern and Union Pacific rail on-site with access to all major American seaports, Canada, and Mexico
- Approximately 1 mile from I-55
- Annexed, zoned heavy industrial, and utilities to site (345 kV on-site)

10. Inland Rail Park • Coal City



- 1,470 Acres with +380 Acres available for expansion
- UP Rail spur on site
- 16" water main line & 30" wastewater service line

1. Marquis Industrial Park • Hennepin



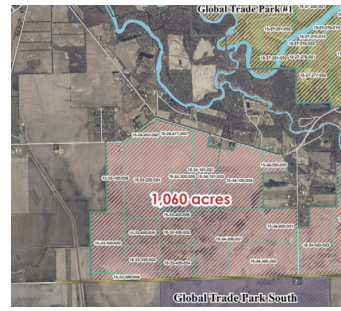
- Access to barge, proximity to interstate (I-80), rail on property
- Proximity to largest ethanol/DDGS producer
- Investments made on N/S roadway to allow for heavier trucks

2. Dual Rail Mega Site • Rochelle



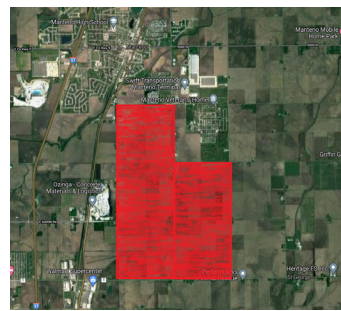
- Connects to I-88 & I-39
- Transload facility less than 1 mile away
- BNSF & UP Class 1 railroads on site; connecting both to allow service for multiple industries

3. Global Trade Park South • Rockford



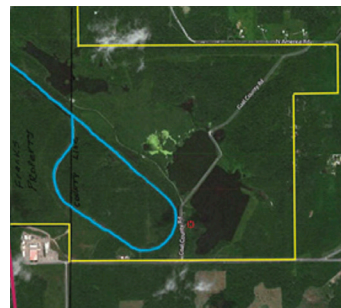
- 1,100 – 3,000 acres (with additional parcels)
- Close to interstate I-39 and Rockford International Airport
- Ability to accommodate large water consumer project

5. Business Park • Manteno



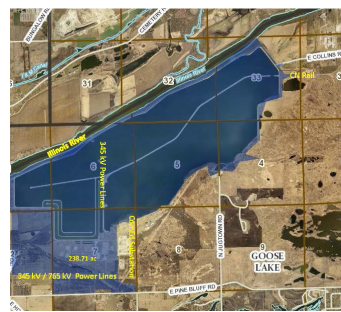
- 3,200 acres
- Less than 2 miles from Interstate 57, US Hwy 45/52 and US Hwy 50
- Rail spur served by Canadian National Railroad

7. Franks Industrial Park • Marion



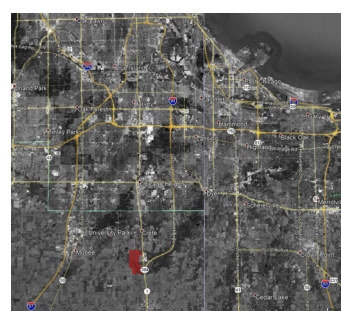
- 1,016 acres
- 0.5 miles from Highway 13
- Adjacent to Canadian National Railroad Company N/S mainline; direct rail access from Canada to the Gulf of Mexico

9. NRG/Old Collins • Morris



- Heavy Energy Capacity on-site
- Three high volume truck terminals within 20 miles
- Single owner on 2,300 Acres

11. CSX Rail Line • Crete



- Vast water/waste water capacity and access to multiple natural gas pipelines
- 2,000 acres
- Dual-track rail (CSX and UP service)



PAULINA SAN MILLAN
 VICE PRESIDENT, BUSINESS DEVELOPMENT
 Paulina.SanMillan@IntersectIllinois.org
 +1 505 818 2584
 230 W. Monroe St. Suite 330, Chicago, IL 60606
 IntersectIllinois.org