

8080 S. DuSable Lake Shore Drive and IQMP **Community Meeting**

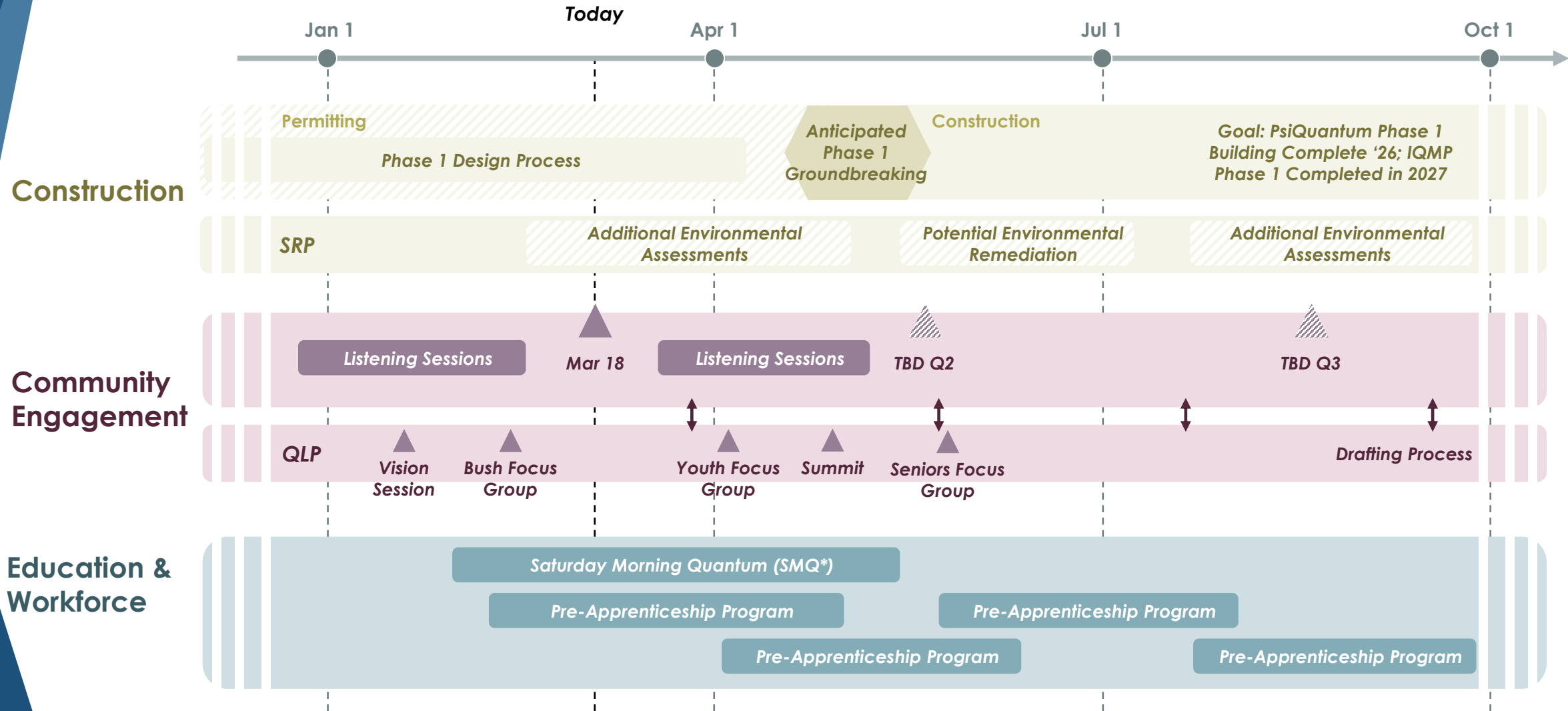
March 18, 2025



AGENDA

- **Timeline Overview**
- **Key Project Updates**
- **Construction Logistics**
- **Breakout Rooms**

Timeline Overview



The IQMP is continuing to gain momentum

● IBM and the National Quantum Algorithm Center

- IBM will join the IQMP and bring their IBM Quantum System Two to the Park.
- The State and its partners launched the National Quantum Algorithm Center, where innovators can advance quantum applications to solve complex problems we face today.

● Quantum Benchmarking Initiative

- Anchor tenant PsiQuantum was advanced to the final phase of DARPA's Utility-Scale Quantum Computing Program, a major milestone on the path to building the world's first fault-tolerant, utility-scale quantum computer.
- At the IQMP, DARPA will similarly be testing and evaluating quantum computers and components from companies working at the Park designing and building promising quantum technologies.

University of Illinois National Quantum Facility (NQF) at IQMP

- **Key component of the IQMP**

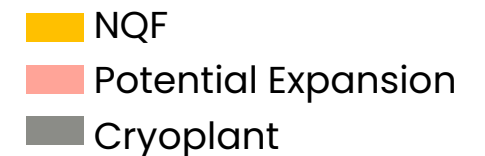
The NQF will accelerate research and development in quantum computing and foster collaboration between academia and industry.

- **The Next Step**

The University of Illinois will release an RFP in the Illinois Higher Education Procurement Bulletin for interested qualified participants to respond.

- **Learn More**

Information sessions will be hosted after the RFP is released, including online and here in South Chicago.



Saturday Morning Quantum (SMQ*)

- **Academic Enrichment**

10-week introduction to concepts like quantum mechanics, computing, superconducting technology, and cryogenic platforms from world-renowned scientists.

- **Local Students**

First cohort consists of 50 high school students, including students at Washington, Carver, Chicago Vocational School, and South Shore.

- **Focus on career opportunities**

Program includes two field trips to Fermilab to participate in demonstrations and tour Fermi's key facilities.



MEET OUR TEAM



CLAYCO

Otto Nichols
*Executive VP,
Shareholder*



CLAYCO

Mary Person
*SVP, Public-Private
Initiatives*



CLAYCO

Brian Baldock
*Senior Project
Director*



CLAYCO

Sean Moran
*Construction
Sustainability Director*



CLAYCO

Sam Boynes
*Manager, Public-
Private Initiatives*



ALL Construction

Luis Puig
President



ALL Construction

Phaedra Leslie
*VP of Diversity,
Workforce Development,
& Community Engagement*



**BOWA
CONSTRUCTION**

Linda Igbinovia
Partner/SVP



**BOWA
CONSTRUCTION**

James McInerney
*SVP, Construction
Operations*



**BOWA
CONSTRUCTION**

Natalie Pedraza
*VP, People, Strategy &
Compliance*

Bid Packages Status Update: Out to Bid

Number ↑	Name					
		08 10	Doors, Frames & Hardware	10 00	Division 10	
03 00	Concrete (Foundations and SL...	08 36	Overhead Doors	10 22	Demountable Partitions Not Published	
03 40	Precast Wall Panel	08 80	Glass & Glazing	10 70	Exterior Specialties	
04 20	Masonry	09 20	Drywall	12 20	Window Treatment	
05 00	Structural Steel	09 30	Tiling	21 00	Fire Protection	
06 10	Rough Carpentry	09 50	Acoustical & Specialty Ceilings	22 20	Plumbing	
06 20	Finished Carpentry	09 60	Flooring	22 30	HVAC	
07 20	Insulation	09 61	Polished Concrete	26 00	Electrical	
07 92	Joint Sealants	09 90	Painting & Coatings	27 00	Low Voltage	
					28 00	Security and Access Control
					32 12	Asphalt
					32 13	Site Concrete
					32 14	Unit Pavers
					32 31	Fences & Gates
					32 80	Irrigation
					32 90	Landscape
					33 00	Site Utilities

Construction Participation

- Project is out to bid now – **SCAN QR CODE**
- Union Project
- Project Goals:
 - Use LOCAL as much as possible.
 - Subcontractors, Fabricators, Suppliers
 - 26% MBE
 - 6% WBE
 - 50% City of Chicago Residents
 - Maximize Local Workforce hiring, Apprenticeship, and Internship opportunities

Contact Information:



Sean Moran

Construction Sustainability Director
morans@claycorp.com



Sam Boynes

Manager, Public-Private Initiatives
boyness@claycorp.com

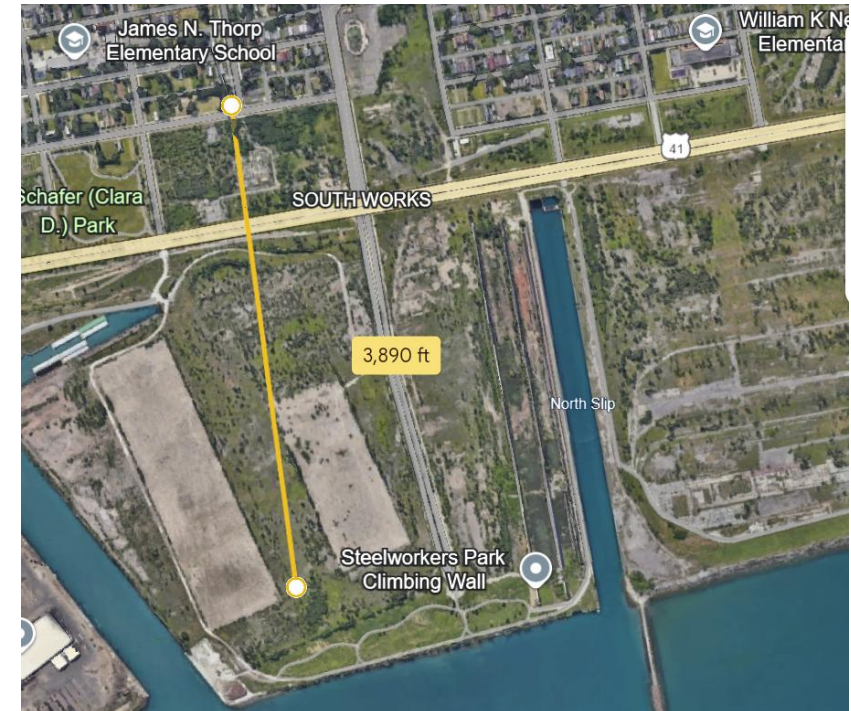
HOW TO WORK WITH US

- Invited Through BuildingConnected
- **NDA** (*Email Sean & Sam to receive and sign NDA*)
- Prequalification TradeTapp
- Safety Program EMR < 1.0



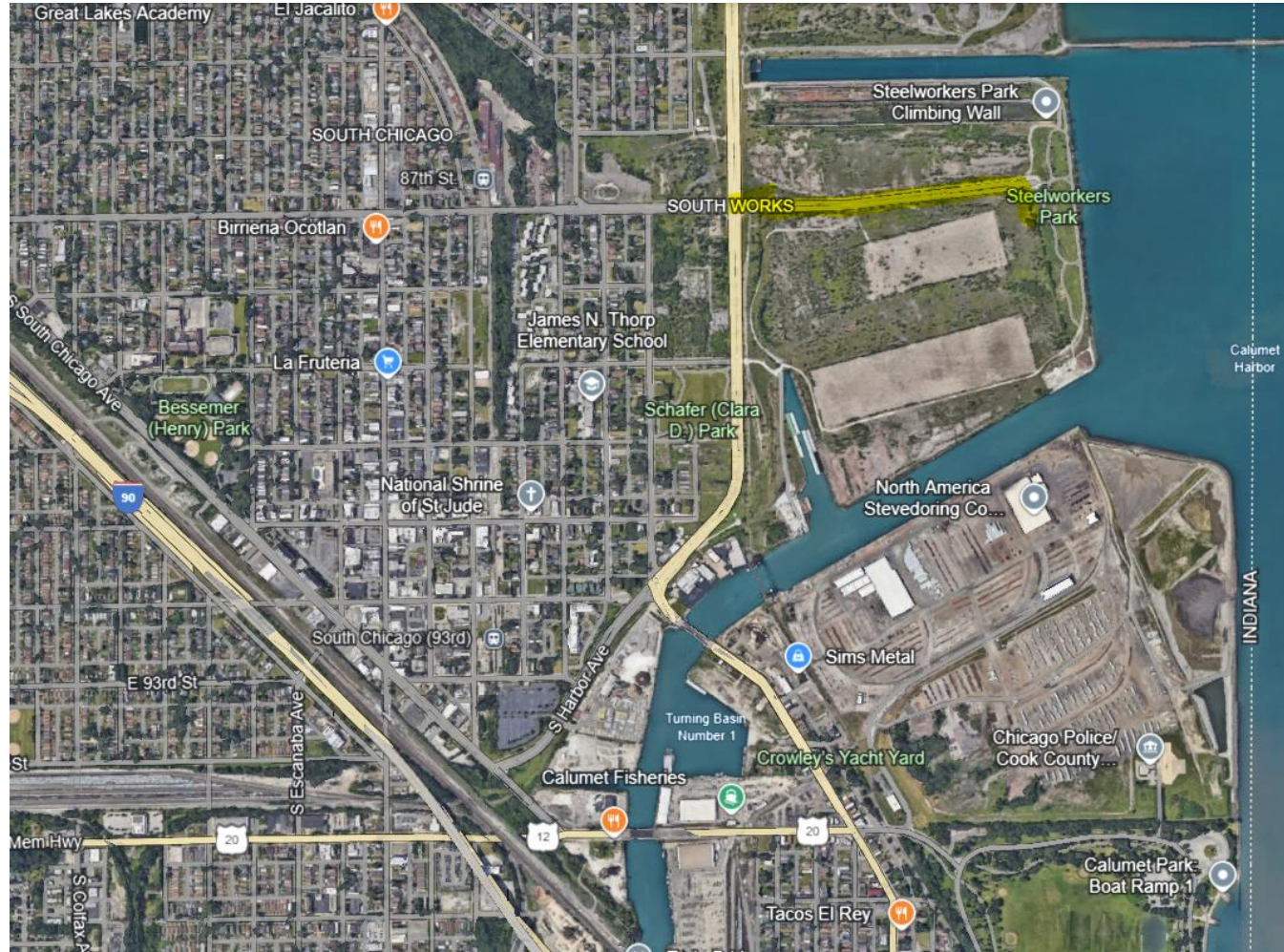
Construction Logistics

- Construction Start Time: 7am (Monday – Saturday)
- Construction vehicles will use main arterial streets and stay off residential neighborhood streets.
- Construction vehicles will enter construction site off 87th Street.
- Vehicles and Trucks will park and unload inside project limits.
- Dedicated wipe down area on-site for trucks prior to leaving site.
- Daily Street Sweeping.



Traffic Control

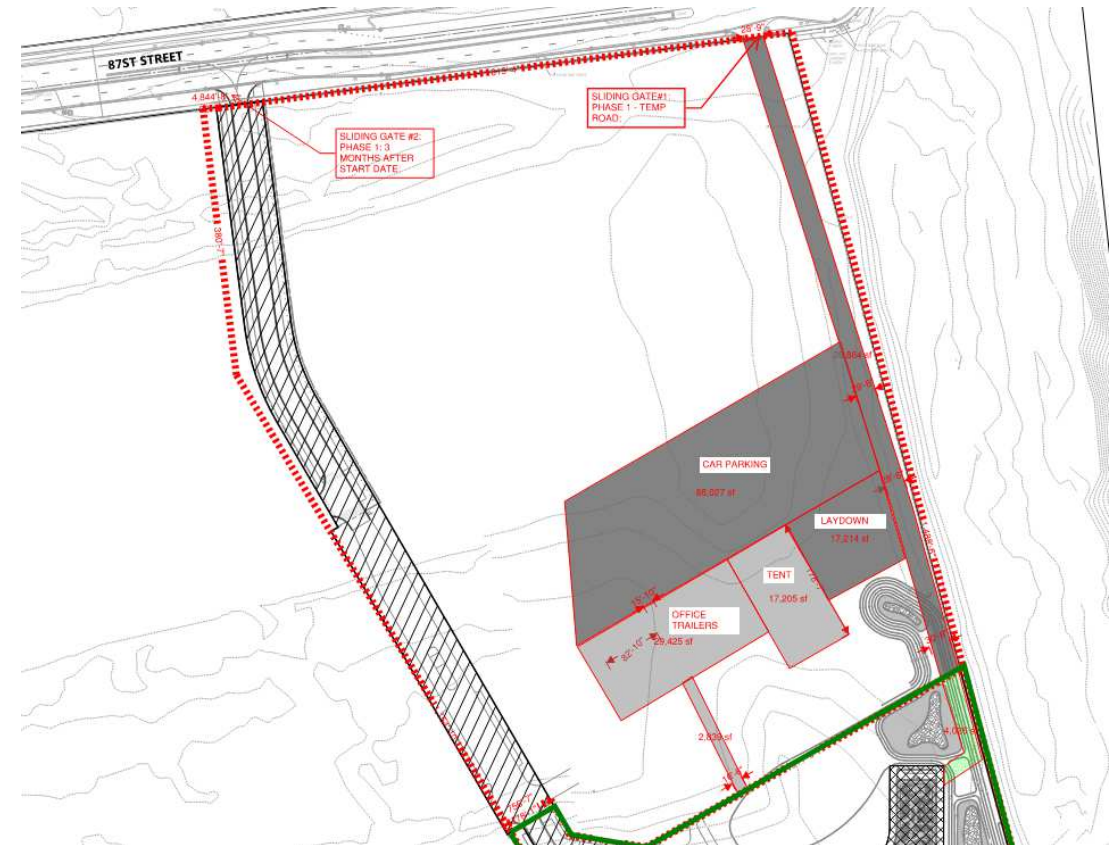
SAFETY IS OUR TOP PRIORITY.



- Trucks / Vehicles to use main arterial streets only, will stay out of neighborhoods.
- Flaggers will be utilized at entrance / exit for pedestrian safety.

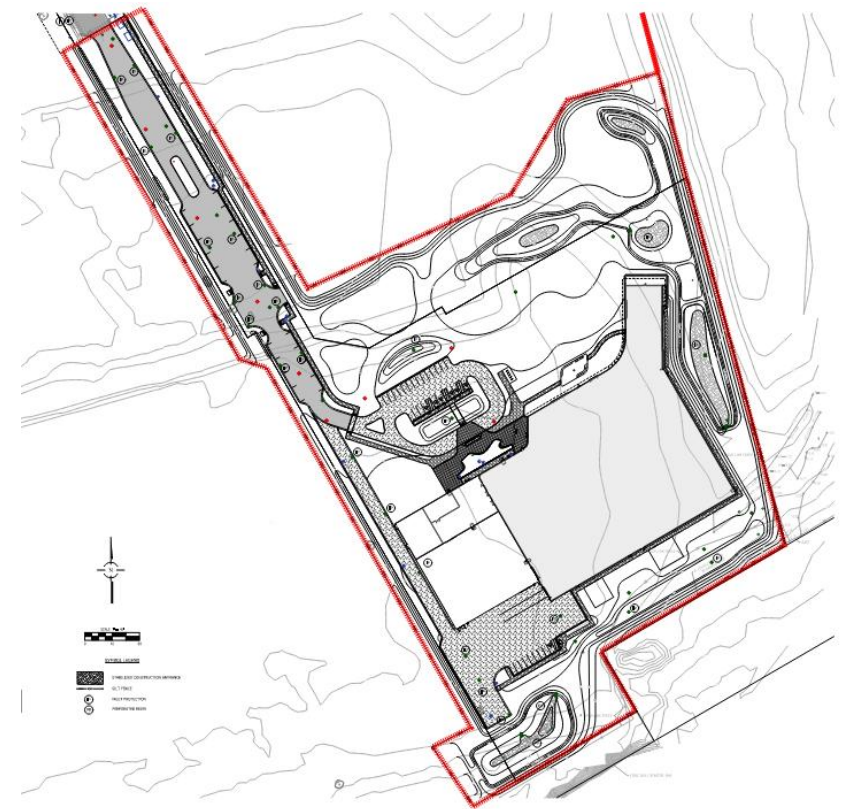
Site Security

- Secure perimeter fence
- Cameras and motion lights at perimeter of site.
- On-site security day and night.



Dust Control

- Silt Fence installed and maintained for the duration of the project
- Daily Dust Control Measures
- Temporary paved roads in and out of site.
- Daily Street Sweeping
- No-Idling Policy



Workforce Safety

- EMR (Experience Modification Rating) .40
- Site Specific Safety Training and Orientation
- Daily Stretch and Flex
- Pre-Task Safety Analysis and Planning
- Free Wellness Therapy / Support of all personnel
- Quarterly Safety Recognition Prizes and catered lunches

CLAYCO | Field Focus



CLAYCO CARES BLUEPRINTS FOR WELLBEING

PAS
Personal Assistance Services

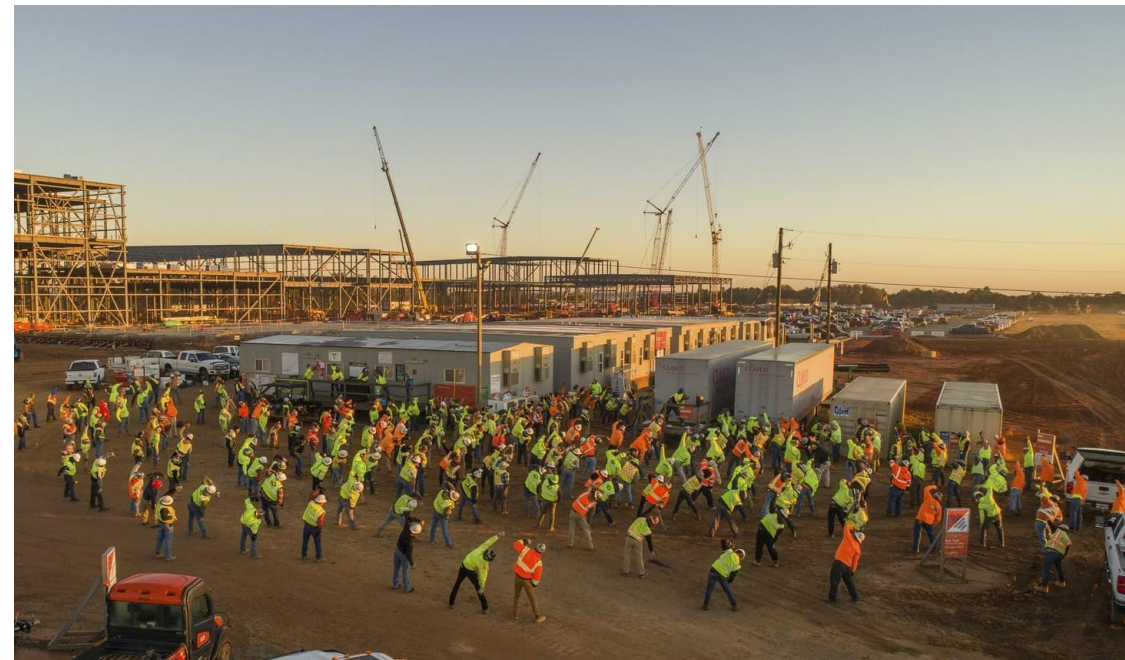
ONLINE MEMBER PORTAL



Available for all
**TRADESPeOPLE
& EMPLOYEES**
On Clayco Enterprise Projects

WWW.MYPASEAP.COM

OUR ORGANIZATION CODE IS: **CLAYCO**



We are working closely with our partners to deliver community investments



- **Thrive Exchange**

New construction of a six-story mid-rise building that will provide 43 units of affordable units. Construction has already started.

- **Sacred Apartments**

The new five-story elevator building will comprise 81 units. Construction is expected to start soon.

- **Galleria 89**

Construction of a new multifamily building with a total of 57 units. Project is in the preconstruction phase.

- **Advocate Health Care**

Community input drives \$1B investment on the South Side. Visit <https://www.advocatehealth.com/MyVoiceMyHealth> to learn more.

**Break out
rooms:**

We want to
hear from you!

Construction Jobs

Construction opportunities
and requirements



Cafeteria

Construction Logistics

Control measures shared
today



Classroom

Environment

Environmental
considerations



Break room

***All breakout rooms are to the right as you
exit the auditorium.***

**Sign up for the
Quantum
Connection,
a monthly
newsletter
from the IQMP**



SCAN HERE

